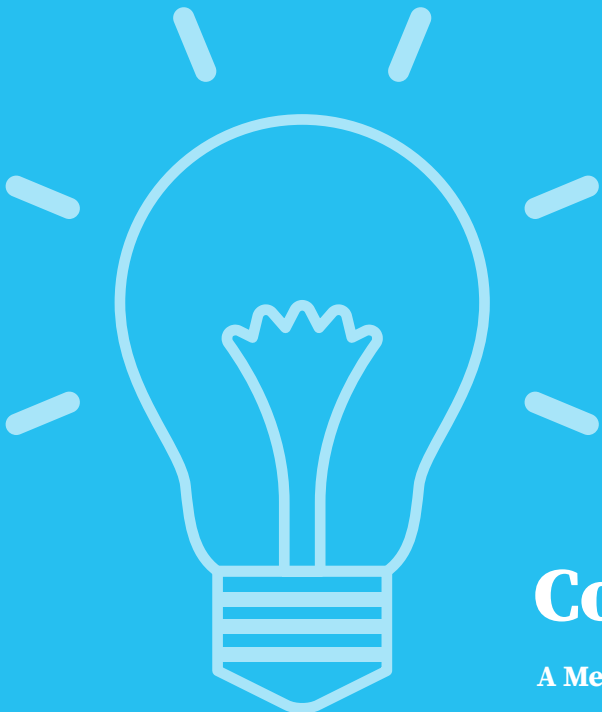


# ANNUAL REPORT

## 2017-2018





# Contents

A Message from the Associate Provost

New Appointments and By the Numbers

Exhibits and Collections at Medical and Health Sciences Libraries

More Room, More to Explore - University Archives and Special Collections

Impact of Inter-Library Loan, New Space for Children's Collection, and Wikipedia Edit-a-thon

Scholarly Work - Global Reach

Presentations, Poster Sessions, Publications, and Awards

Fond Farewell

Photography  
Kathryn Croskey  
Matt Kass  
Craig Terry

# A Message from the Associate Provost

Taking its name from a place for books, a key pillar of the US academic library has been its collections. One of the long-standing attributes of large academic research library has been the size of the print collection. More volumes has always meant better. While there are large libraries such as Harvard and Library of Congress who collect for the sake of collecting and preservation, by the end of the 20st century many large academic libraries began to question the sustainability of collection size as a marker of true value.

Smaller libraries have long recognized that they cannot afford to buy everything their user's want. For those materials with only the occasional need, a well-developed interlibrary loan system can work well, especially given the proliferation of electronic journals and high-speed internet. Speedy delivery systems also play a role in the sharing of print resources. We are fortunate to have partners with much larger research libraries in this greater area who do have a mission of keeping most of their volumes. Electronic repositories of print materials available for free or a subscription serve a role in access. There are a number of projects where large libraries are banding together and making decisions to store only

a few copies of bound journals, in selected disparate locations. The rest of the libraries then recycle their local copies, freeing up space for library

“What each academic library wants to do is find the right balance of print, electronic, and digital resources to meet the needs of its community.”

programming. This may have once sounded like heresy, and yet many leading research invitations are implementing such a change. At Rowan University Libraries we have made decisions to shrink the size of the print collection in selected areas to capitalize on the best use of space. In some fields, such as

History, we understand the value of that print book to the researcher and we try to keep all of our print collections. In the Sciences and Engineering, the research is far more dependent on other sources of scholarly communication. There we can more greatly reduce the size of the print collection. Libraries are unlikely to ever totally abandon the print volume. What each academic library wants to do is to find the right balance of print, electronic, and digital resources to meet the needs of its community. Rowan University Libraries will continue to strive to have the best collections we can offer to our growing research institutions across all three campuses.

Scott P. Muir  
Associate Provost  
Rowan University Libraries



# New Appointments

Welcome to the newest members of our faculty and staff.



**Nancy Demaris**  
ASSISTANT SUPERVISOR OF  
ACCESS SERVICES

Nancy has transitioned to her new position at Campbell Library from RowanSOM Health and Sciences Library. Nancy is a Rowan alumni with a Bachelor of Arts in Elementary Education and a Bachelor of Arts in Psychology.



**Chant'e Dingle**  
LIBRARY ASSISTANT

Chant'e joined the Campbell Library Access Services team as a Library Assistant. Chant'e is pursuing a Bachelor of Science degree and hopes to work in the medical field one day. Chant'e is a resident of Clayton, NJ.



**Dan Kipnis**  
LIBRARIAN

Dan worked for 16 years as a Senior Education Services Librarian at Thomas Jefferson University in Philadelphia and spent 10 years as Editor of the Jefferson Digital Commons, the institutional repository of the University. Dan is currently the Chair-Elect on the Bepress Advisory Board.



**Rochelle Mead-Wroniuk**  
LIBRARY ASSISTANT

Rochelle joined the Campbell Library Access Services team as a Library Assistant. Rochelle is also an employee of Monroe Township Public School as a Para-Professional and long time resident of Williamstown, NJ.



**Benjamin Saracco**  
REFERENCE & RESEARCH  
LIBRARIAN

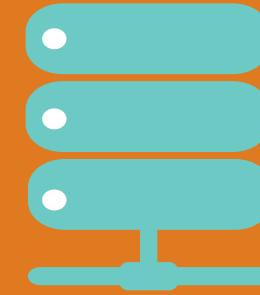
Benjamin comes to CMSRU Medical Library after serving as the New Jersey reference and electronic resources librarian with the New Jersey State Library, an affiliate of Thomas Edison State University. Ben also previously served as a librarian at two urban public libraries in New Jersey.



**Angela Steward**  
SECRETARIAL ASSISTANT 3

Angela joined our team in March as a Secretarial Assistant 3 for Library Administration. Angela came to Rowan University in December 2013 to what is now known as the Office of Career Management. Angela is currently pursuing a degree in Sociology.

# BY THE NUMBERS



**963**  
DATABASES

**261,436**



**INTERLIBRARY LOANS**

**6,895**

**PROVIDED**

**RECEIVED**

**4,194**

**REFERENCE**



**CHAT SESSIONS**



**INFORMATION  
LITERACY SESSIONS  
4,295 ATTENDEES**



**380,139**  
PHYSICAL BOOKS

**688,499**  
ELECTRONIC BOOKS





## Exhibits at ROWANSOM Health Sciences Library



**Dr. Herring stands in front of his “exhibit of drawings” with Librarians Micki McIntyre and Marita Malone. Dr. Herring loaned these items for the inaugural exhibit at the Health and Sciences Library.**

## ROWANSOM Library Special Collections

The RowanSOM Library's Special Collections include a variety of resources: books, journals, theses, dissertations and yearbooks. Books held in the collection primarily address osteopathic medicine and its practitioners as well as the general history of medicine and medical education.

Titles by, and about Andrew Taylor Still, the father of osteopathic medicine, are included in the collection. Dr. Still's autobiography, published in 1908, as well as his other writings addressing the philosophy and practice of the

profession, are available. Early books by other practitioners of osteopathic medicine which address specific techniques and practices are also incorporated into the collection.

Under the general history of medicine, the earliest title held in the collection was published in 1894 and is entitled, *Secret Nostrums and Systems of Medicine: A Book of Formulas*, compiled by Charles Wilmot Oleson.

The collection holds books by Dr. William Osler, considered to be the Father of Modern Medicine, including reprints of his most famous essay, “*Aequanimitas*”

Throughout the year, RowanSOM Health Sciences Library creates a variety of exhibits and displays, celebrating a wide variety of topics including history of medicine, diversity, childhood toys, alumni, folk remedies, and faculty scholarship.

One exhibit celebrated the life of A.T. Still (founder of osteopathic medicine) as well as the History of SOM. This exhibit looked back at the 40 year history of the School of Osteopathic Medicine, from the College of Medicine and Dentistry of New Jersey through the UMDNJ years to our present Rowan University affiliation. The winter exhibit focused on the History of Medical Education for African-Americans and Notable African-American Graduates of SOM, which was designed to compliment the NLM exhibit on African-American Surgeons.

These exhibits are a learning opportunity for students, as much as they are chance to break from studying for medical exams.

in the book *Aequanimitas*; with other *Addresses to Medical Students, Nurses and Practitioners of Medicine* originally published in 1906, as well as *Principles and Practice of Medicine*, his most famous work, originally published in 1892.

The landmark study of medical education, published in 1910 by Abraham Flexner, *Medical Education in the United States and Canada*, is also among the resources included in our special collections

## CMSRU Born-Digital Collection

According to the Online Computer Library Center (OCLC), born-digital is defined as resources that are created and managed in digital form. This was the idea that the founding deans of the Cooper Medical School of Rowan University had in mind when they charged the CMSRU Library to have a born-digital collection. CMSRU Library Leadership went to work to build a library collection that faculty, staff and students could access from any location. Course directors worked with librarians to select required textbooks that were available electronically and the remaining few print journal subscriptions were discontinued in favor

of electronic versions. The born-digital idea paired well with another trend in higher education, the BYOD, or bring-your-own-device movement. CMSRU adopted a policy that required medical students to bring their own devices to lectures, labs, and the library; which ensured access to the digital collection. The combination of born-digital and BYOD formed a library without books and computers. While the patrons of the CMSRU Library adapted to the totally digital environment, eventually some concessions were made in order to purchase a small collection of print material to accommodate learners who preferred certain materials in print.

Librarians continue to assist patrons in navigating the use of different devices, web browsers, and technologies to access the comprehensive digital collection.



## CMSRU Special Collection - Index Medicus

The CMSRU Library is honored to house a special collection of indexes that served as the foundation of the current system of medical bibliographic classification. Contemporary health science professionals are familiar with the National Library of Medicine online database of biomedical information, MEDLINE, and some may be familiar with its precursor, the printed Index Medicus. Mostly medical librarians are familiar with the Index Catalogue of the Library of the Surgeon General's Office U.S. Army, started by Dr. John Shaw Billings in 1880.

In 1864 Dr. Billings, an officer in the Army of the Potomac, was put in charge of a small collection of books accumulated by the Office of the Surgeon General. He took this job very

seriously and delved into collecting new and old books, then expanded to include pamphlets and journals. Once he amassed a sizable collection, he realized that it needed to be organized and cataloged in order to be accessible for use. Some articles point out that Billings' own difficulties in finding literature for his medical thesis also contributed to his passion for collecting and organizing medical literature. Dr. Billings originally based the classification system of the Index Medicus on a modified version of the Nomenclature of Disease of the Royal College of Physicians of London. By 1960, the system had evolved into the Medical Subject Headings (MeSH) that are still used today, with new headings being issued each year.

The CMSRU Library acquired the

volumes in 1980, when the original Cooper Hospital Library, the Reuben L. Sharp Health Sciences Library, purchased the collection of the closing Philadelphia General Hospital. The historic volumes were on display in the library in a special glass case until the new Cooper Hospital Pavilion building was erected and library renovations involved the creation of an Archives Room, to house these volumes along with Cooper Hospital archival materials. Recent renovations in the CMSRU hospital library have made it possible to once again put the volumes on display. The Library staff is proud to display these volumes which are an integral part of the history of medical libraries and medical librarianship.



# More Room, More to Explore

For many years Special Collections were often stuck in some remote corner of a library, seemingly hidden away from the public. Now, many libraries are promoting these unique collections, moving them to a much more prominent location within the building, and beginning digitization.

In August of 2017, Campbell Library applied this same model, moving its University Archives and Special Collections (UASC) from a tucked

away nook in the tower of the Library to a new, highly accessible location on the third floor. This move has already led to a marked increase in visitors, from both researchers and students. Recently, UASC has hosted as many as 12 researchers a month, up from 2-3 when UASC was in its previous location in the fifth floor tower.

## ROOM TO GROW

Possibly the most exciting development in UASC is the recent increase of undergraduate classes utilizing the new space. Unlike its previous small room in the fifth floor tower, the new reading room provides ample room to accommodate the size of the average undergraduate class. Several professors, especially from the History Department, make a point to bring their students for a visit to UASC each semester. Through these sessions, students get a sense of what services are available and what one can discover when researching in the archives. The visiting students have a chance to handle documents and examine a selection of archival collections. They especially enjoy going behind the scenes, looking at the collections with a hands-on

experience. This activity helps students feel less intimidated by the idea of archives and special collections, which in turn encourages them to come back to UASC as well as explore other repositories in the region. One student even went so far to enthusiastically proclaim the experience “life-changing.”

## NEW ADDITIONS

An increase in visitation is just one of the exciting changes, as UASC has started acquiring new collections. Most recently, UASC received the Pete Zakroff Collection, which highlights the history of education in New Jersey. Zakroff is a retired creative instructional designer and writer. Over the course of his career, he frequently wrote about the K-12 public educational system in New Jersey. He donated all of his research materials and writings on this topic to UASC so that researchers can investigate the history of local education at Rowan, which has had a pivotal role in training the region’s educators since 1923. Rowan associate professor of TV and film in the Department of Radio, Television, and Film in the College of Communication and Creative Arts, David Bianculli, recently donated an extensive collection to UASC. He is a frequent guest host of NPR’s Fresh Air with Terry Gross and a long-time television critic. Bianculli is also an author and the founder of the digital

# University Archives & Special Collections

magazine, TV Worth Watching. Bianculli donated thousands of his books, VHS, DVDs, interview materials, sound recordings and other documents, all of which detail the history of television and film from its earliest beginnings through the start of the 21st century. The collection’s strongest areas are works on the “golden age” of television during the mid-20th century. The collection is awaiting processing and will be an important and fascinating asset.

UASC also looks forward to receiving a collection donated by Melanie Stewart, Associate Dean of the College of Performing Arts, and an acclaimed stage choreographer, director, performer of dance, and producer. Stewart has agreed to donate her collection, which includes videos, scripts, photos, and other materials that document the work she and her students have done in dance over the course of her career. This collection sheds light on an integral facet of the art of dance in the mid-Atlantic region.

## MORE FINDING AIDS

In addition to acquiring new collections, but UASC now has 7 complete or nearly complete finding aids available online at [findingaids.rowan.edu](http://findingaids.rowan.edu). Previously, there were no UASC finding aids available electronically or in hard copy. Along with creating finding aids,



**Senior seminar students review historical documents with Professor Emily Blanck in the new reading room for University Archives and Special Collections.**

collections that were previously in disarray are being reorganized and put back together. Many collections have been transferred to new, acid-free and archivally-sound boxes and folders. This is the first step in preparation for writing additional finding aids. Collections have also been examined to weed out duplicate and unnecessary documents. As these changes are made, collections become increasingly valuable and accessible to researchers.

This vital and necessary work will continue for the foreseeable future so as to make the collection as useable and visible as possible. Anyone interested in exploring archives and special collections should contact University Archivist Sara Borden. Sara can be reached at 856-256-3543 or email [borden@rowan.edu](mailto:borden@rowan.edu)



**University Archivist Sara Borden holds a land deed from the early 1700s.**





Archivist Sara Borden discusses local historical documents with Professor Emily Blanck from History Department with Senior Seminar students.

**“Students get a sense of what services are available and what one can discover... Students especially enjoy going behind the scenes, looking at the collections with a hands-on experience.”**



# Impact of Inter-Library Loan

Rowan University Libraries own and subscribe to a rich array of journals, books, and multimedia selected to meet curricular, research, and accreditation needs. Additionally, Rowan partners with libraries across the region and around the globe to share resources and to supplement holdings to meet specialized research needs.

Research materials are essential to the generation of new knowledge. The libraries borrow from partners to support grant applications, publishing, and teaching. Materials are loaned to researchers around the globe and the most frequent borrowers from the

library at the Cooper Medical School are Sloan Kettering Institute and the Centers for Disease Control and Prevention.

Unique materials that researchers have requested include microfilm, folios, and dissertations.

Statistics from last academic year document the growth of Rowan's strength as a research institution. Over 41,500 items were loaned and 5,889 items borrowed. The fact that Rowan is a net lender proves that the collections curated by the three libraries are strong and useful to patrons from a wide variety of partner libraries.

Staff members who manage Interlibrary Loan services are indeed sleuths. They employ their many systems, dig through databases, and check online repositories to meet the needs of researchers. InterLibrary Loan staff use several systems to lend and borrow materials: RAPID, EZ Borrow, ILLiad, Jersey Cat, RePrints Desk, and DocLine. Each system is designed for different types of materials or libraries.

Faculty members regularly contact library administration to recognize staff members who successfully fill their requests in a timely manner.



**Little profs from the Glassboro campus preschool visit the new Children's collection for a story hour, organized by Dr. Joanna Murphy (far left) as part of a celebration for Women's History Month.**

## New Space for Children's Collection

From the beginning Glassboro Normal School collected children's literature and picture books for pre-service teachers to use in preparation for teaching reading. This practice continued throughout the 20th Century as the Normal School transitioned to Glassboro State College and then Rowan College. The result is a rich research collection for today's students of culture, history, literature and American childhood.

Recently, Campbell Library moved this collection to the 2nd floor reading room. During this process staff inventoried, repaired, and relabeled this collection to make it more accessible to faculty and students. Courses in History, Social Sciences, and Education now draw on this collection for primary source material. Recent student projects have used these materials to explore changes in how children are introduced to disability, gender, and social roles.

In recognition of growing programs at Rowan, Campbell Library has once again begun collecting current children's literature and picture books.

## Wikipedia Edit-a-thon

This year Campbell Library hosted its first Wikipedia Edit-a-thon, a forum for students, faculty, and staff to learn about and edit Wikipedia together. The goal of the event was to improve Wikipedia's coverage of New Jersey Women's history. While Wikipedia's vision is a commitment to "Imagine a world in which every single human being can freely share in the sum of all knowledge," the majority of Wikipedia editors are male. This gender gap resulted in a disproportionate number of articles about men or topics important to men.

As the fifth-most popular website

in the world, this gap has significant implications for the web's information ecosystem. Following the lead of other universities, to help close this gap the library identified a number of "stub" (insufficiently short) Wikipedia articles related to New Jersey Women for participants to edit. Participants took a sticky note with a name off a board, and got to work after a brief introductory presentation. Collectively the group made 42 edits during the session, an important contribution to the diversity of Wikipedia's content. In addition, Wikipedia was the perfect platform to teach information literacy because participants were able to see the real-time results of their work citing reliable, verifiable sources in the free encyclopedia viewable and editable by all.

**Senior Library Assistant Marryam Naqvi helps a student with an inter-library loan request.**



**Campbell Librarians work with faculty and staff during the Wikipedia Edit-a-thon.**

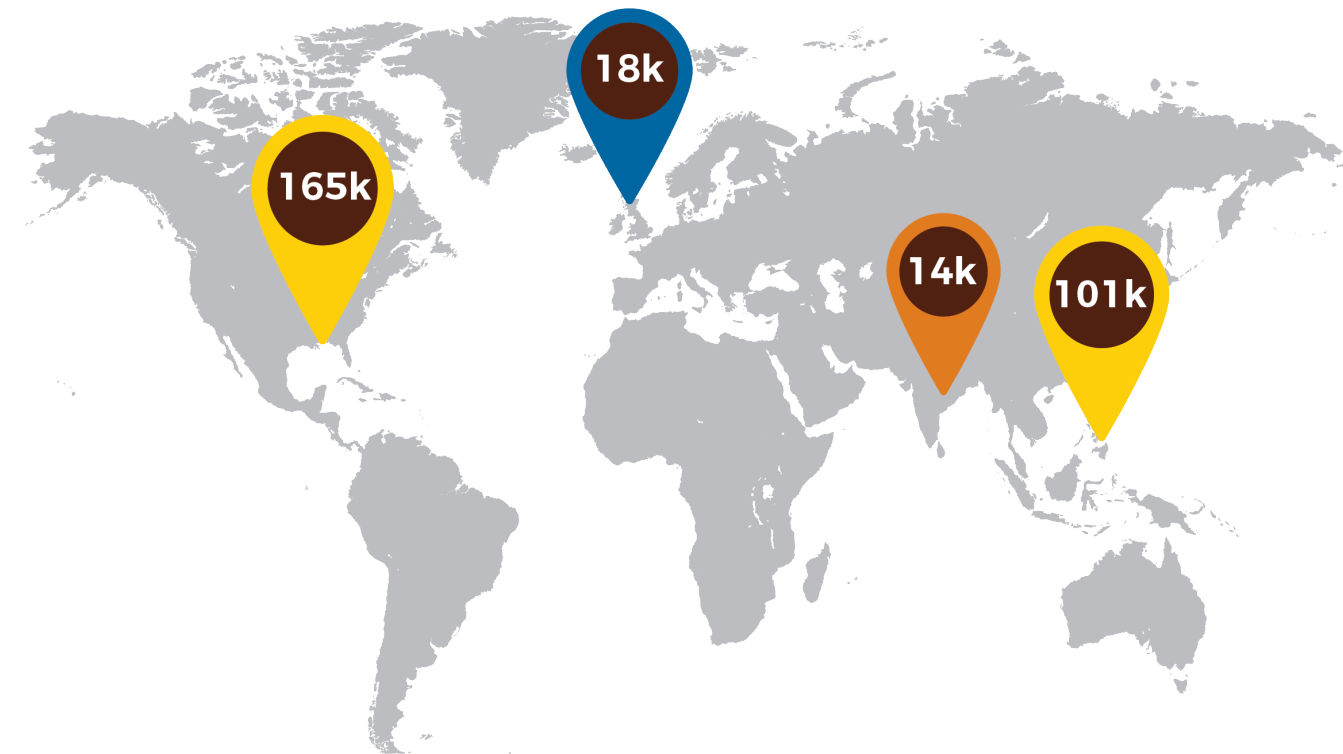


## Scholarly Work - Global Reach

Our institutional repository, Rowan Digital Works, is moving the Libraries to the center of the research efforts of our faculty. RDW experienced tremendous growth during this academic year, with 345 new content items posted in new and existing collections. Rowan University Libraries' new Open Access Publishing Fund supported seven faculty publications, which were posted in the growing Faculty Scholarship collection of Open Access papers. Links to RDW were added to library catalog

records for theses and dissertations available online. Many new collections of student and faculty work were added to RDW: CMSRU Capstone Projects, The Hollybush Series of faculty papers, The Gallery student art book (2005 - 2015), the TCLC Program Proceedings, yearbooks from 1984 - 2014, posters from Stratford Campus Research Day, and posters from the STEM Student Research Symposium. The Division of Research and the President's Office used RDW to

manage grant applications for the Seed Funding program, the Research Experience for Diversity and Inclusion program and the Program for Inclusive Pedagogy and Educational Reform. These programs, plus outreach to the university community over the academic year, resulted in dozens of new faculty researcher profiles. A new tool for harvesting citations from the web enabled library staff to update all the profiles created the previous year.



The above graphic shows the number of downloads for the top four downloading countries: United States, Philippines, United Kingdom, India.



197  
RESEARCHER  
PROFILES



29,743  
VIEWS IN  
215  
COUNTRIES



440,778  
DOWNLOADS OF  
4,530  
WORKS

## TOP INSTITUTIONAL USERS

Georgia Department of Education

North Carolina Research & Education Network

U.S. Department of Education

Missouri Research & Education Network

Facebook Inc.



## PRESENTATIONS, POSTER SESSIONS,

**Benson, Michael.** (2017, July). Bare Bones of Photoshop. Presented at the Tri-State College Library Collaborative Summer Camp, Philadelphia, PA.

**Benson, Michael.** (2017, December). Developing a Digital Scholarship Center on the Foundation of Creativity. Presented at the Coalition for Networked Information Membership Meeting, Washington, DC.

**Benson, Michael.** Exploring Photo Editing Software for Creativity and Production” Presentation at the Tri-State College Library Cooperative Summer Camp 2018 in Cabrini University (June 11, 2018)

**Benson, M.** (2018). Glassboro Summit Collection. Retrieved from [http://glassborosummit.rowan.edu/Collaborative digital scholarship project with Jocelyn Naarden, Lori Marshall, Karen Holloway, Rosemary Braude, Joe Cardona, Erin Cahill, Marryam Naqvi, Anwar Hussein, Shilpa Rele, Jonathan Jiras, and Sara Borden.](http://glassborosummit.rowan.edu/Collaborative%20digital%20scholarship%20project%20with%20Jocelyn%20Naarden,%20Lori%20Marshall,%20Karen%20Holloway,%20Rosemary%20Braude,%20Joe%20Cardona,%20Erin%20Cahill,%20Marryam%20Naqvi,%20Anwar%20Hussein,%20Shilpa%20Rele,%20Jonathan%20Jiras,%20and%20Sara%20Borden)

**Benson, Michael.** “Summit at Holly Bush” a collaborative digital

scholarship project with Jocelyn Naarden and Trey Jaworski. <https://glassborosummit.rowan.edu/scholar/summit-at-hollybush/index>

**Benson, Michael.** (2018) Rowan Public Art. Retrieved from [https://publicart.rowan.edu/Collaborative digital scholarship project with Jocelyn Naarden, Jonathan Jiras, Christine Davidian, Lori Marshall, Mary Salvante, Skeffington Thomas, Jim Greenwell, Arijit De, Joseph Napolitano, and Nguyen Ton.](https://publicart.rowan.edu/Collaborative%20digital%20scholarship%20project%20with%20Jocelyn%20Naarden,%20Jonathan%20Jiras,%20Christine%20Davidian,%20Lori%20Marshall,%20Mary%20Salvante,%20Skeffington%20Thomas,%20Jim%20Greenwell,%20Arijit%20De,%20Joseph%20Napolitano,%20and%20Nguyen%20Ton)

**Benson, Michael and Jiras, Jonathan.** (2018, April). Building Collaborative Relationships Through Digital Projects. Presented at the Tri-State College Library Cooperative Annual Spring Conference, Philadelphia, PA.

**Borden, Sara, A.** (2017, November). The Thomas Whitney Synnott Papers. Presented at the Wenonah Historical Society. Wenonah, NJ.

**Borden, Sara, A.** (2018, April). Educating Your Colleagues on Copyright. Presented at the Delaware Valley Archivists Group. Philadelphia, PA.

**Breakenridge, S.** (2018, January). 24/7 library operations: Will they actually come? Evidence Based Library and Information Practice, 12(4), 186-192, <https://journals.library.ualberta.ca/ebliip/index.php/EBLIP/article/view/29313>

**Brown, Angelina and Kelly Hayden.** (2018, April). The ‘missing’ link: a collaborative effort to improve the accuracy of our holdings. Presented at the Tri-state College Library Cooperative Annual Spring Conference. Philadelphia, PA..

**Angelina Brown** (2018, May). Using Worldshare Query Collections for Nefarious Purposes. Presented at the 2018 NJLA Conference. Atlantic City, NJ.

**Dewysockie, Tim** and Elayna Turner. (2018, June). Securing Your Digital Life. Presented at New Jersey Library Association Annual Conference. Atlantic City, NJ.

**Dewysockie, Tim and Jiras, Jonathan.** (2018, June). ILLiad Workflow Project. Presented to the NJLA CUS/ACRL-NJ Technology Innovation Award Committee at Montclair State University and at the New

## PUBLICATIONS, AND AWARDS

Jersey Library Association Annual Conference. Atlantic City, NJ.

**Christine Davidian.** (2018, February). Review of: Ktiv: The International Collection of Digitized Hebrew Manuscripts in ARLIS/NA Multimedia & Technology Reviews. Retrieved from <https://www.arlisna.org/publications/multimedia-technology-reviews/1363-ktiv-the-international-collection-of-digitized-hebrew-manuscripts>

**Fink, S.B.** (2017, November). Academic Library Safety & Security – Administration and Staff Need To Be On the Lookout. In F. Baudino & C. Johnson (Editor), Brick and Click – An Academic Library Symposium (pp. 52-61). Retrieved from <https://www.nwmissouri.edu/library/brick-andclick/presentations/eproceedings.pdf> Maryville, Missouri

**Fink, Susan.** (2017, November). Academic Library Safety & Security – Administration and Staff Need To Be On the Lookout. Presented at the 17th Brick & Click – Academic Library Symposium. Maryville, Missouri. (<https://goo.gl/S2sAvN>) November 3, 2017

**Gaspar, Deborah and Kelly Hayden.** (2017). [Legacy Practices: Implications for Leadership. Advances in Library Administration and Organization, 37, 147-166.](#)

**Gaspar, Deborah.** (2018, April). Building Partnerships around Student Needs. Presented at ACRL / DeVal Spring Conference. Allentown, PA.

**Gibbs, Lauren.** (2018, June). “Forming” a resolution to EZproxy Host Errors. Presented to the NJLA CUS/ACRL-NJ Technology Innovation Award Committee at Montclair State University and at the New Jersey Library Association Annual Conference. Atlantic City, NJ.

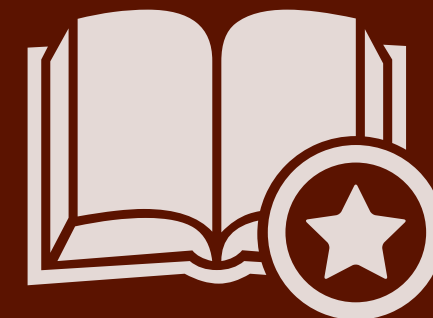
**Jiras, Jonathan.** (2018, June). Getting Started With WordPress. Presented to the Tri-State College Library Cooperative Summer Camp. Philadelphia, PA.

**Kennedy, Samantha, Shilpa Rele** and Stephen Robishaw. (2017, November). Helping Faculty Embrace Fate: Collaborating to Build and Promote an Institutional Repository and a Scholarly Communications Program on Campus. Present-

ed at the Charleston Conference. Charles, SC.

**Kipnis, Daniel G.;** Palmer, Lisa (University of Massachusetts Medical School), Kubilius, Ramune (Northwestern University Feinberg School of Medicine). (2018, April). Taking the Pulse of Health Sciences Institutional Repositories: An Environmental Scan of Medical Schools’ Institutional Repositories. Presented at Southern Mississippi Institutional Repository Conference.

**Kipnis, Daniel G.;** Palmer, Lisa (University of Massachusetts Medical School), Kubilius, Ramune (Northwestern University Feinberg School of Medicine). (2018, June). Taking the Temperatures of Health Sciences IRs: A Survey and Analysis of Medical Schools’ Institutional Repositories. Presented at Open Repositories, Bozeman Montana.





## PRESENTATIONS, POSTER SESSIONS,

**Kipnis, Daniel G.;** Adriani, Lisa A. (Quinnipiac University), Kolbin, Ronda (Quinnipiac University), and Verbit, Daniel (Thomas Jefferson University). (2018, May). Phone a friend (or a librarian): Learning and communication preferences among occupational therapy students at three universities. Poster presented at Medical Library Association Annual Conference, Atlanta Georgia, May 22, 2018

**Kowalsky, M.** (2018, June). Leveling Freshman Database Instruction Entry Points. Presentation at the New Jersey Library Association (NJLA) Annual Conference, Atlantic City, NJ.

**Kowalsky, M.** (2018, May). Business Database Activities for High School Students. Presentation at the New Jersey Business/Technology Education Association Spring Conference, Pennington, NJ.

**Kowalsky, M.** (2018, February). Designing Database Lessons for Business Students using Bloom's Taxonomy. Presented at the Eastern Educational Research Association (EERA) Annual Conference, Clearwater, FL.

**Donovan, T., & Kowalsky, M.** (2018, February). Determining the Nature and Scope of Research-Based Co-Teaching Practices. Presented at the Eastern Educational Research Association (EERA) Annual Conference, Clearwater, FL.

**Kowalsky, M.** (2017, November). Evaluating Your Library's Services for Students with Disabilities. Presented at the New Jersey Association of School Librarians (NJASL) Annual Conference, Long Branch, NJ.

**Kowalsky, M. & Long, L.** (2018). Teacher Education Discussion Module: Online Teacher Chats about Technology in Schools. In Williams, D., & Harkness, N. N., Diverse Learning Opportunities through Technology-Based Curriculum Design. IGI Global: Hershey, PA.

Schoen, E. J., Hughes, D. H., & **Kowalsky, M.** (2017, Summer). A Case Study in Securities Law: SEC v. Baker. Journal of Legal Studies Education, 34(2), 273-315.

**Kowalsky, M.** (2017, June). The Follow-up to Hamilton. ALA Cognotes. Regular Issue, p. 1, 13. Requested reprint in conference Highlights Issue as A Follow-up to Hamilton: Grant Takes the Spotlight, p. 4.

**Kowalsky, M.** (2017, June). From Mars to the Moon: Author Weir Flies High. ALA Cognotes conference Highlights Issue, p. 1, 5.

**Kowalsky, M.** (2017, June). Large City Libraries Bring Communities Together. ALA Cognotes. Regular Issue, p. 3. Requested reprint in conference Highlights Issue, p. 2.

**Kowalsky, M.** (2017, June). Real-world Retirement Not Always a Cheery Story. ALA Cognotes. Regular Issue, p. 8.

**Michelle Kowalsky** received a \$500 travel award from the Library of Congress Teaching with Primary Sources Grant to attend their Eastern Region Conference in Pittsburgh, PA.

**Michelle Kowalsky** was selected as this year's Research Showcase

## PUBLICATIONS, AND AWARDS

Award Winner by the New Jersey Library Association (NJLA).

**Malone, Marita,** MS AHIP. (2018, May). Embedded with Problem-Based Learner Medical Students at the Rowan University Health Sciences Library. Presented at Medical Library Association Conference, Atlanta, GA.

**Matthews, Jennifer.** (2018, June). Electronic Peer Analysis in Collection Development. Presented at ALCTS CMS Publications Committee Forum: American Library Association, Annual Conference. New Orleans, LA.

**Matthews, Jennifer.** (2018, May). Review of: Women Film Pioneers Project. ARLIS/NA Multimedia & Technology Reviews. Retrieved from wfpp.cdrs.columbia.edu.

**Matthews, Jennifer, Christine Davidian, and Nick Taraborrelli.** (2018, January). Innovative Electronic Peer Analysis for Collection Development. Presented at the Virtual Academic Library Environment Conference. New Brunswick, NJ.

**Matthews, Jennifer and Christine Davidian.** (2017, November). Nothing is Linear about Open Access Initiatives: Promoting OA at a New Research Institution. Presented at Charleston Library Conference. Charleston, SC.

**Matthews, Jennifer,** Christina Harlow (Stanford University), Rita Johnston (University of North Carolina at Charlotte), et al. (2017, October). Digital Library Assessment: Leveraging Infrastructure to Support Community Practice. Presented at DLF Forum 2017: Digital Library Federation. Pittsburgh, PA.

**Muir, Scott P.** and Jeanne R. Davidson. (2018) Good People, Bad Job Situations: A Middle Manager's Dilemma. Library Leadership & Management, Volume 32:2.

**Rele, Shilpa, Denise Brush and Christine Davidian.** (2017, October). Rowan Digital Works. Presentation at Tri-College Library Consortium. Philadelphia, PA.

**Rele, Shilpa** and Thomas Padilla (University of Nevada-Las Vegas). (2018, January). Co-de-

veloped and presented a webinar on Networking for Diversity Fellows. (ARL's Initiative to Recruit a Diverse Workforce (IRDW), ARL/SAA Mosaic Fellows, Institute of Museum and Library Services (IMLS) Digital Inclusiveness fellows), organized by Association for Research Libraries.

**Saracco, Benjamin.** (2018, February). Get Published: A guide for selecting and evaluating academic journals, avoiding predatory publishers, and tracking your influence using free online tools and library database subscriptions. Cooper Research Institute for physicians practicing at the Cooper University Hospital. Camden, NJ.





# A Fond Farewell

**We wish a fond farewell to four long time colleagues.**

**Susan Breakenridge**, Director of Business, Facilities and Technical Services, accepted a new position as Assistant Dean Library Administration at the University of

Oregon Libraries. Susan left after **five years** of service.

**Shawnee Lewis**, Administrative Assistant for Keith & Shirley Campbell Library, retired after **20 years** of service.

**Barbara Miller**, Director of Medical

Library for CMSRU, retired after **six years** of service. Barbara had previously worked for SOM as well.

**Bruce Whitham**, Librarian for Campbell Library and former Dean of Libraries, retired after **12 years** of service.

## Making a Gift

As the university grows, new library technologies and resources are needed to support Rowan's expanding curriculum and our diverse set of students, faculty, and staff.

Gifts to Rowan University Libraries have a tremendous impact across every area of campus. Whether making an unrestricted gift or supporting a specific program, support from alumni, parents and friends of Rowan University helps to provide the best opportunities for each of our students.

Please consider joining our efforts. For more information on how you can make a difference, visit this website: [giving.rufoundation.org](http://giving.rufoundation.org).



## Keep in touch...

**KEITH AND SHIRLEY  
CAMPBELL LIBRARY**  
201 Mullica Hill Road  
Glassboro, NJ 08028  
856.256.4802  
[www.lib.rowan.edu](http://www.lib.rowan.edu)

**CMSRU LIBRARY**  
Cooper Medical School  
of Rowan University  
401 Broadway  
Camden, NJ 08103  
856-361-2855

**HEALTH SCIENCES LIBRARY**  
School of Osteopathic Medicine  
Academic Center  
One Medical Center Drive  
Stratford, NJ 08084  
856-566-6800